

Operation MANUAL

MODE d'emploi

15 US Gallon (56 Litre) Low Profile Steel Tank Oil Drain

**Cuvette de vidange d'huile métallique
surbaissée de 15 gallons US (56 litres)**



Product No. / N° du prod.

350515

Mod No. / N° du mod.

JOIDRLPM

Warnings



IMPORTANT

READ THESE INSTRUCTIONS AND ALL WARNINGS PRIOR TO USING THIS EQUIPMENT. UNDERSTAND ALL OPERATING PROCEDURES, SAFETY WARNINGS AND MAINTENANCE REQUIREMENTS. FAILURE TO DO SO COULD CAUSE AN ACCIDENT RESULTING IN SERIOUS OR FATAL INJURY AND/OR PERSONAL PROPERTY DAMAGE.

WARNING

The use of shop equipment is subject to certain hazards that cannot be prevented by mechanical means, but only by exercise of intelligence, care, and common sense. It is therefore essential to have personnel involved in the use and operation of equipment who are careful, competent, trained, and qualified in the safe operation of this equipment and its proper use when servicing motor vehicles and their components. The owner and / or operator shall study and understand the product and safety instructions before operating this equipment. Safety information shall be emphasized and understood. If the operator is not fluent in English, the product and safety instructions shall be read to and discussed with the operator in the operator's native language by the purchaser / owner or his designee, making sure that the operator comprehends their contents. **A copy of these instructions / warnings shall be retained for future reference.**

INSPECTION

Visual inspection shall be made before each use of this equipment, checking for abnormal conditions, such as cracked welds, leaks, damaged, loose or missing parts. This equipment shall be removed immediately from service if it is believed to have been subjected to an abnormal or shock load, the equipment shall be inspected by a qualified repair facility. Owners and / or operators should be aware that repair of this equipment may require specialized knowledge and facilities. It is recommended that this equipment be inspected annually by a qualified repair facility. Defective parts, decals, safety labels or signs should be replaced with JET specified parts.

WARNING

- Wear protective eyewear such as safety goggles, safety glass or face shield to protect from splashing oil
- **BURN HAZARD** – be aware that engine oil may be hot enough to burn or scald skin – either wait for the engine oil to cool or take appropriate measures to protect yourself from burns.
- Properly dispose of / recycle oil using local guidelines
- **FIRE HAZARD** – waste oil is flammable **NEVER USE NEAR OPEN FLAMES OR HEAT SOURCES**
- Do not overfill the oil drain, exercise caution when transporting the oil drain with oil in it to avoid splashing and potential spills
- Never leave unit unattended when draining oil into or evacuating oil out of the unit.
- **SLIP HAZARD** – **Always clean up oil spills or splashes immediately**
- **NEVER WORK UNDER AN UNSUPPORTED VEHICLE**

Work Area

- **Keep work area clean**, free of clutter and well lit. Cluttered and dark work areas can cause accidents.
- **Keep children and bystanders** away while operating the low profile steel oil drain. Distractions can cause you to lose control, so visitors should remain at a safe distance from the work area.
- **Be aware of all power lines, electrical circuits**, water pipes and other mechanical hazards in your work area, particularly those hazards below the work surface hidden from the operator's view that may be unintentionally contacted and may cause personal harm or property damage.
- **Be alert of your surroundings**. Using the low profile steel oil drain in confined work areas may put you dangerously close to cutting tools and rotating parts.

Personal Safety

- **Stay alert**, watch what you are doing and use common sense when using the low profile oil drain. Do not use the low profile steel oil drain while you are tired or under the influence of drugs, alcohol or medication. A moment of inattention while operating the low profile steel oil drain may result in serious personal injury.
- **Dress properly**. Do not wear loose clothing, dangling objects, or jewelry. Keep your hair, clothing and gloves away from moving parts. Loose clothes, jewelry or long hair can be caught in moving parts.
- **Use safety apparel and equipment**. Use safety goggles or safety glasses with side shields which comply with current national standards, or when needed, a face shield. Use as dust mask in dusty work conditions. This applies to all persons in the work area. Also use non-skid safety shoes, hardhat, gloves, dust collection systems, and hearing protection when appropriate.
- Make sure the Oil Drain is used only on a dry, oil/grease free, flat, level, ground surface capable of supporting the weight of the unit and contents.
- Do not work under the vehicle without proper support devices.
- Prior to using the Oil Drain Dolly, make sure to read and understand all warnings, safety precautions, and instructions as outlined in the vehicle manufacturers and the support device's instruction manuals.
- Do not allow anyone in the vehicle while using the Oil Drain. Keep all bystanders a safe distance away from the vehicle.
- Avoid burns. Allow the engine oil to completely cool before draining the oil into the Oil Drain
- Do not leave the Oil Drain unattended when operating or draining the oil.



Never use the Oil Drain near open flames or heat sources.

- Make sure to remove the Oil Drain and all other tools and equipment before lowering the vehicle to the floor surface.



Follow guidelines for engine oil disposal. Used engine oil should be removed from the vehicle and properly disposed of or recycled. Contact your local solid/liquid waste authority for information on recycling and/or disposal.

- Oil contains hazardous chemicals which may be harmful to the environment and hazardous to your health.

Low Profile Steel Oil Drain Use And Care

- Do not modify the low profile steel oil drain in any way. Unauthorized modification may impair the function and/or safety and could affect the life of the equipment. There are specific applications for which the low profile steel oil drain was designed.
- **Always check of damaged or worn out parts before using the low profile steel oil drain. Broken parts will affect the low profile steel oil drains operation. Replace or repair damaged or worn parts immediately.**
- **Do not exceed the low profile steel oil drain load capacity.**
- **Distribute the load evenly.** Uneven loads may cause the low profile steel oil drain to tip, resulting in personal injury to the operator or others.
- **Use the low profile steel oil drain on flat and level surfaces** capable of supporting the low profile steel oil drain and its maximum load. Pulling or pushing a load on a slanted or uneven surface can result in loss of control.
- **Store idle low profile steel oil drain.** When low profile steel oil drain is not in use, store it in a secure place out of the reach of children. Inspect it for good working condition prior to storage and before re-use.

Assembly

NOTE: Please refer to the Parts Diagram for the following assembly instructions.

1. Install the Bolt #21 (including #22, #23, #24) into the wheel axle under the back of the Reservoir #2 and attach the Wheel #25, secure with Lock nut #26. Be sure the wheel can spin freely.
2. Attach the Caster #16 into the bracket at the front of the reservoir #2; secure with Washer#18 and Nut #17.
3. Attach the Pump Assembly (#8, #9, #12, #13, #14, #27) to the front side of the Reservoir #2; secure with Washer #28 and Nut #15.
4. Connect one end of Short Hose #10 to Hose Fitting #11 under the Reservoir, and another end to Hose Fitting #8 under the Pump #9; secure them with Hose Clamps #7.
5. Connect Long Hose #6 to Hose Fitting #8 on top of the Hand Pump #9, Secure with Hose Clamps #7.
6. Attach the Handle (#4) onto the middle of Mounting Bracket; secure with Bolt #19 and Lock Nut #20.
7. Put the Filter Screen #1 onto the Reservoir #2.

Operation

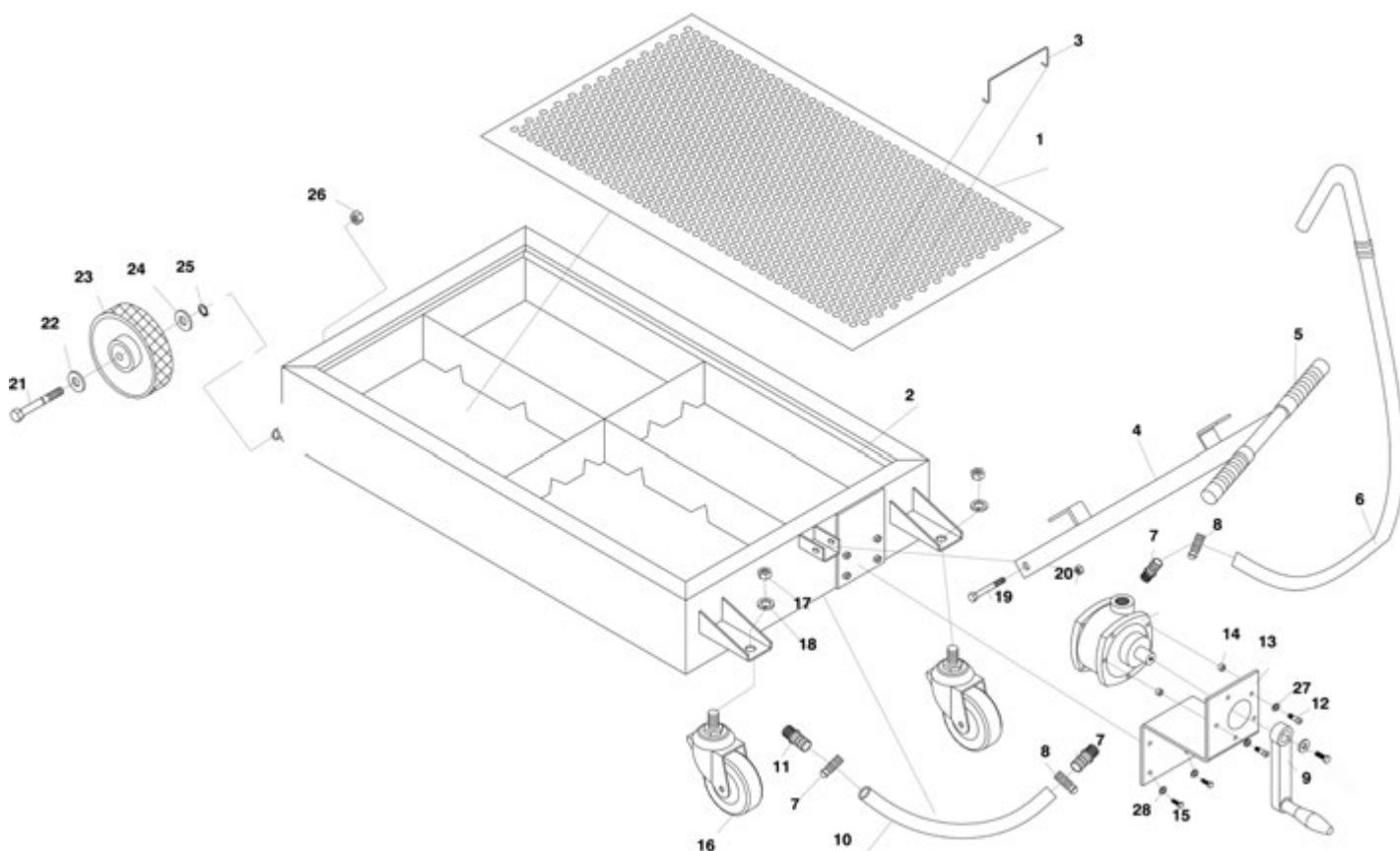
⚠ WARNING: Follow all safety precautions outlined in this manual and the vehicle manual.

1. Move the Oil Drain under the vehicle, making sure the Opening of Reservoir is positioned directly below the oil drain plug of the engine.
2. Remove the oil drain plug of the engine, and allow the old oil to completely drain from the engine into the Reservoir.
3. Once the old engine oil is completely drained, replace the oil drain plug of the engine and refill, if needed.
4. When emptying the old oil from the Reservoir of the Oil Drain, make sure to follow guidelines for engine oil disposal. If necessary, contact your local solid/liquid waste authority for information on recycling and/or disposal. Move the oil drain to where the old oil will be temporary stored (e.g., a tank), put the Long Hose #6 into the tank, and crank the hand pump until old oil in the drain is evacuated out.

Maintenance

1. Maintain your low profile oil drain. It is recommended that the general condition of any low profile oil drain be examined before it is used. Keep your low profile oil drain in good repair by adopting a program of conscientious repair and maintenance. If any abnormal vibrations or noise occurs, have the problem corrected before further use. Have necessary repairs made by qualified service personnel. Before each use, inspect the general condition of the Oil Drain. Check for broken or bent parts, loose or missing parts, and any condition that may affect the proper operation of the product. If a problem occurs, have the problem corrected before further use. **Do not use damaged equipment.**
2. When cleaning, use a clean cloth with detergent or mild solvent. Then, store the Oil Drain in a safe and dry location

Parts List



| REF | Part Number | Description |
|-----|----------------|---------------------------------------|
| 1 | PCN-JOIDLPM-1 | Screen |
| 3 | PCN-JOIDLPM-3 | Screen Handle |
| 4 | PCN-JOIDLPM-4 | Handle And Handle Grip # 5 |
| 6 | PCN-JOIDLPM-6 | Long Hose |
| 8 | PCN-JOIDLPM-8 | Hose Fitting |
| 9 | PCN-JOIDLPM-9 | Pump |
| 10 | PCN-JOIDLPM-10 | Short Hose |
| 11 | PCN-JOIDLPM-11 | Hose Fitting |
| 16 | PCN-JOIDLPM-16 | Caster Assembly # 16, 17, 18 |
| 25 | PCN-JOIDLPM-25 | Wheel Assembly 21, 22, 23, 24, 25, 26 |